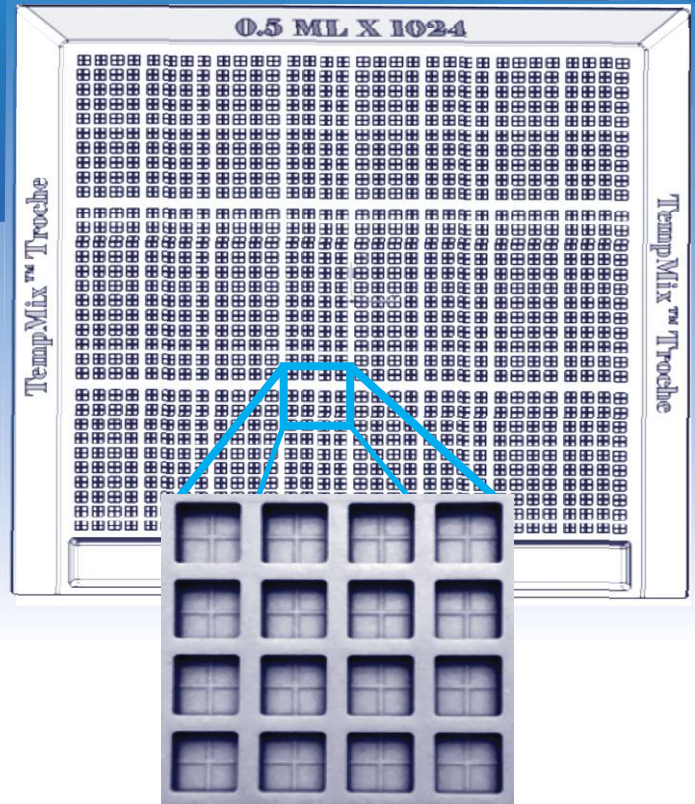
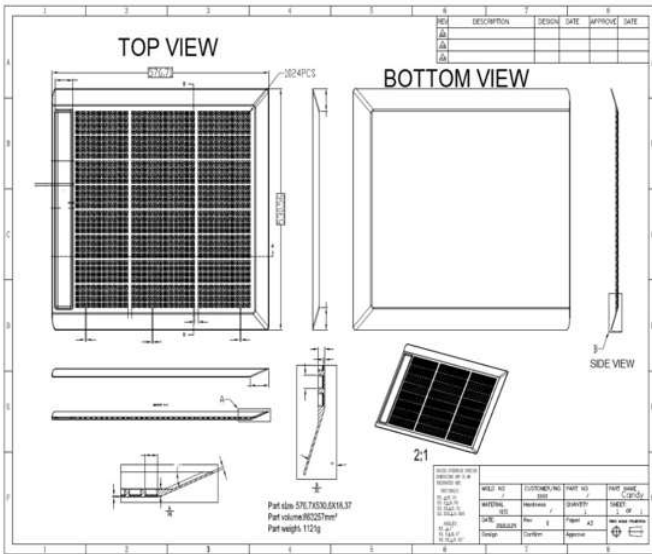


TEMPMIX™ TROCHE

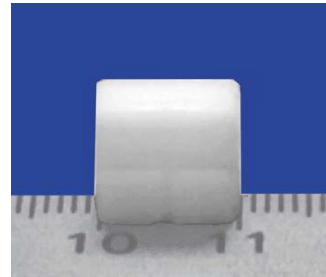
HIGH CAPACITY PRODUCTION
1024-count 0.5ml Troche Mold

Material Specifications:

- * Medical-grade silicon
- * High temperature tolerance
- * Autoclavable
- * Flexible & durable
- * Color choices: Blue and Green



Makes 1,024
scored troches or treats per batch



MINI TROCHE

Troche Dimension: 4.5x10x11mm
Volume of each cavity: 0.5ml +/- 0.02ml
(*base calibration required)
Net Weight: 1121gm
Tray Dimension: 22.7" x 20.9"
Thickness 0.72"



TEMPERATURE TOLERANCE
250°C

Designed by Compounding Pharmacist
Dr. Henry Truong, PharmD, MS

- * Silicon mixture screened and tested for 181 substances in the Candidate List of Substance of Very High Concern (SVHC) in the European Chemicals Agency (ECHA) in accordance with Article 33 of Regulation (EC) No. 1907/2006.
- * Silicon mixture is SGS-inspected and tested for heavy metals, polybrominated biphenyls, phthalates.

Medical Grade Silicon



Retail: \$1,599/Set (2)*

*Volume Discount

Contact Us: +1 (866) 562-7476

vitabiologic@gmail.com